



Oneida[®]
Air Systems

Super
The DUST[®]
GORILLA

Powerful ■ Economical ■ Made in the USA

7_09



"I completed installation Sat. evening and turned it on. Boy was I a happy camper. It did 100 times what I thought it would do. It works, believe me. Thank you. Worth every penny I spent."

- J. Neison

Shown with
optional stand.

2hp Super Gorilla Dust Collector

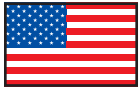
Quote Sheet

1.800.732.4065

www.oneida-air.com

Oneida Air Systems, Inc. was founded in 1993 to bring cost effective, state-of-the-art dust collection systems and material handling ductwork to woodworking shops. OAS designs and manufactures industrial grade dust collection systems that create a practical, safe and healthy work place environment.

The Oneida Advantage



Made in the USA!



Shown with
Optional Stand.

① **Motor**

U.S Made Baldor Motor 2 hp, Class F TEFC Motor with a 1.15 Service Factor
Magnetic Starter with on/off switch and amperage overload protector.

② **Fan Wheel / Fan Housing**

Cast Aluminum Alloy 356-51, non-sparking, non-ferrous as required NFPA fire code.
No Rivets or Welds
Extremely Strong
Backward Incline design. Designed for high performance low noise.
Dynamic two-plane balanced to ISO 6.3 Specifications. (Same as aircraft turbines.)

Welded Fan Housing
11 ga. Motor Housing Plate

③ **Cyclone Construction**

Cyclone Technology eliminates filter maintenance.
7" welded inlet with neutral vane.
16 Gauge cyclone barrel with welded construction.
Powder coated paint finish over heavy gauge steel. Welded cyclone body.
Outlet can be rotated independent of inlet - 8 bolt patterns

④ **Filter - FCS133995**

95 sq. ft. filter area.
Accredited independent lab testing verifies filter media filtration of 99.9% of test material from 0.2-2.0 microns @ 11 FPM.
Filters have wide pleat spacing and teflon like interior coating for easy dust release.



Hepa Filter Media Available

HEPA rating captures 99.97% of particles 0.3 microns in diameter.

⑤ **Internal Silencer**

Built in Silencer reduces sound to 78 - 81 dBA @ 10'. Patented design.

⑥ **Dust Drums - ODK350901**

35 or 55 gallon Fiber or 55 gallon Steel available.

Bag Gripper available. Line dust drum with an easy to empty plastic bag.

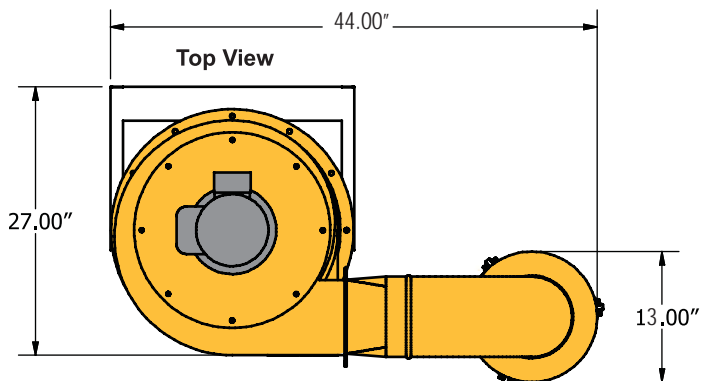
⑦ **Heavy-Duty Bracket - SMS300021**

⑧ **2 Year Warranty**

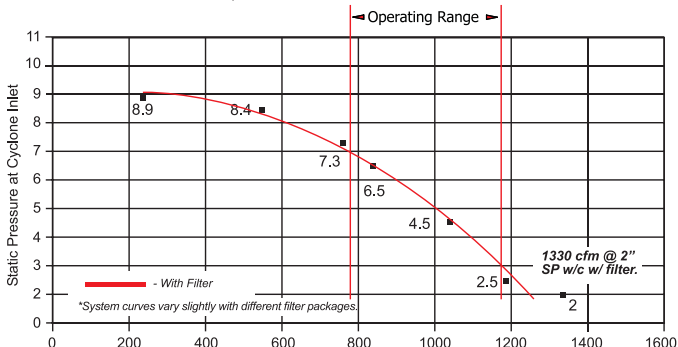
Dimensions shown w/ 2" flex hose between drum and cone collars.



Included
Bracket
SMS300021



2hp Super Dust Gorilla CFM vs. SP Curve*



System Performance

- ▶ 1339 cfm @ 2" SP w/ Filter

System Dimensions

- ▶ Height w/ 35 Gallon Drum: 92"
- ▶ Footprint w/ Ext. Cartridge: 27" x 42.75"
- ▶ Inlet Diameter: Welded 7" w/ Neutral Vane
- ▶ Outlet: Rectangle (Square to Round Adapter Available)
- ▶ Powder Coated Paint Finish Over Heavy Gauge Steel
- ▶ Weather-Proof Cyclone and Fan Blower
- ▶ Welded Cyclone Body

Integral Fan Blower

Industrial
Quality
Motor

- ▶ U.S. Made Baldor
- ▶ 2 Horsepower Single Phase
- ▶ TEFC Motor, 1.15 Service Factor
- ▶ Insulation Class F
- ▶ Voltage: 115 - 230V
- ▶ Amperage: 23 / 11.5A
- ▶ Cast Aluminum Alloy 356-51 / Backward Inclined / Non-Sparking, Non-Ferrous as Required by NFPA Fire Code / Dynamic, Two-Plane Balanced to ISO 6.3 Specifications. The Same as Aircraft Turbine Rotors.

BALDOR
MOTORS • DRIVES • GENERATORS

Filter Media

ASHRAE
Tested

- ▶ 95 Sq. Ft. High Efficiency Axtar Spun-Bonded Media
- ▶ Accredited, Independent Lab Tested
- ▶ Teflon-Like Coating to Facilitate Dust Cake Release
- ▶ Filter Media Captures 99.9% of Test Material from 0.2 - 2 Microns @ 11 FPM

Sound Level

- ▶ With Standard Silencer & Filter: 78 - 81 dBA @ 10'

Dust Bin

- ▶ 35 Gallon Fiber Drum. Other Sizes & Types Available.

Included

- ▶ 2 Yr. Warranty
- ▶ Heavy Duty One Piece Wall Bracket
- ▶ Conveniently Ships By Common Carrier
- ▶ Internal Silencer - Pat. Pend.
- ▶ Magnetic Starter - w/ On-Off Switch Preset for Add-On Remote with Amperage Overload Protector (1 Phase)
- ▶ FREE D.I.Y. Duct Design Guide

Options

See Accessories
page for pricing.

- ▶ Duct Design Service
- ▶ Filter Efficiency Gauge
- ▶ Stand for Free Standing Unit
- ▶ 55 Gal. Steel or Fiber Drums
- ▶ Bag Gripper, Plastic Bag Hold-Down System
- ▶ Remote Starter - Radio Frequency
- ▶ HEPA Filter Media - Captures 99.97% @ 0.3 Microns

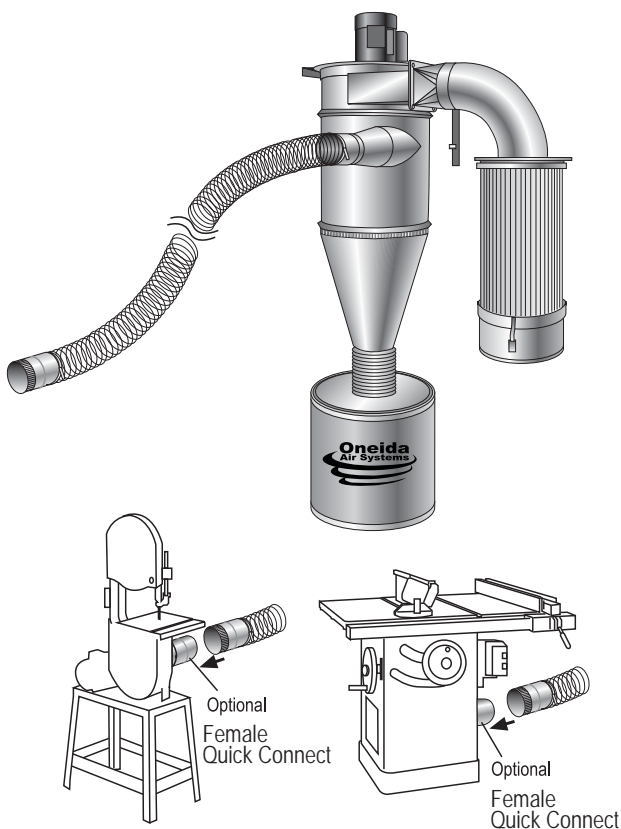
*Oneida reserves the right to change or modify specs and system appearance without notice. Actual system appearance may vary.

Oneida 2hp Super Gorilla

Part #	Description	Price
XGK020105	2hp Super Dust Gorilla 1 Phase	\$1,380.00

*This proposal may be withdrawn by Oneida Air Systems if not accepted within 30 days.

These ductwork kits were designed by Oneida to take the guesswork out of ducting your dust collector and to save you time and effort.



Basic Starter Duct Kit 1

Ductwork Kit #1 for 7" Inlet

Package #1 - KDZ000001

Can be attached to single tools during use.

Included in Package

- (2) Band Clamps 3" to 6" - ACB060000 - \$3.47 ea.
- (1) Spiral Adapter 5" - DAS050000 - \$8.61 ea.
- (20 ft.) 5" Flex Hose - DHF050000 - \$5.40 / ft.
- (2) Female 5" Quick Connect - DQF050000 - \$15.81 ea.
- (1) Male 5" Quick Connect - DQM050000 - \$15.81 ea.
- (1) 5" to 4" Reducer - DRL050400 - \$10.86 ea.
- (1) 7" to 5" Reducer - DRL070500 - \$11.63 ea.

Total with System Purchase - \$185.75

Basic Starter Duct Kit 2

Ductwork Kit #2 for 7" Inlet

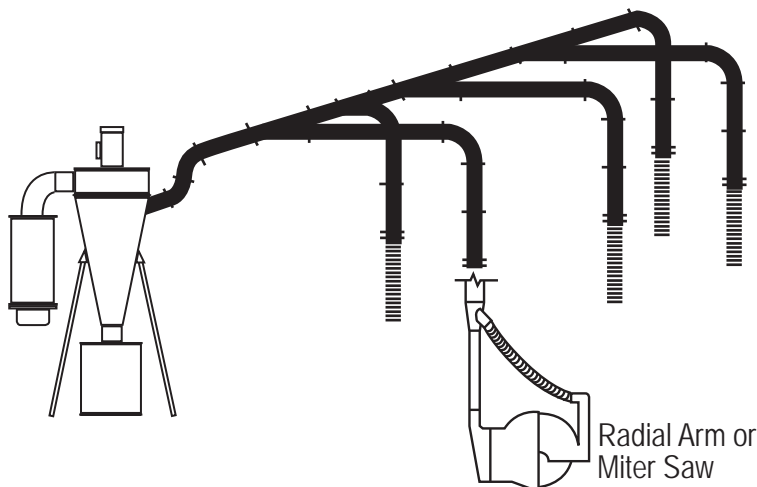
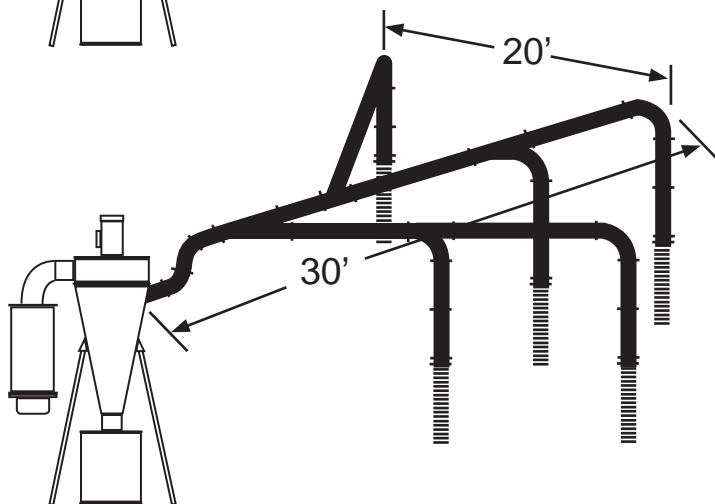
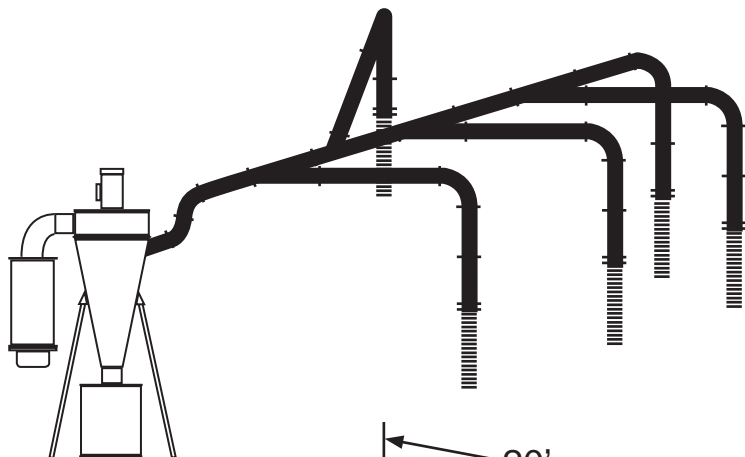
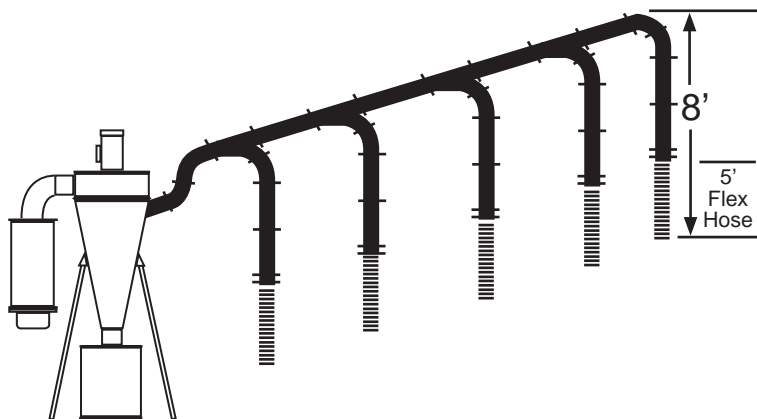
Package #2 - KDZ000002

Can connect tools at two locations near your collector.

Included in Package

- (4) Band Clamps 3" to 6" - ACB060000 - \$3.47 ea.
- (2) Blastgate Adapters 5" - DAB050000 - \$8.62 ea.
- (1) End Cap - DCZ050000 - \$7.83 ea.
- (2) 90 5" Adjustable Elbows - DEA900500 - \$14.49 ea.
- (2) 5" Dia. Aluminum Blast Gates - DGA050000 - \$22.94 ea.
- (20 ft.) 5" Flex Hose - DHF050000 - \$5.40 / ft.
- (1) 5"x 60" 26 ga. Pipe - DPT260560 - \$15.80 ea.
- (1) 7"x 60" 26 ga. Pipe - DPT260760 - \$21.12 ea.
- (4) Female Quick Connect 5" Dia. - DQF050000 - \$15.81 ea.
- (2) Male Quick Connect 5" Dia. - DQM050000 - \$15.81 ea.
- (3) 5" to 4" Reducer - DRL050400 - \$10.86 ea.
- (1) 5x5x45 Deg. Wye - DWS050505 - \$34.16 ea.
- (1) 7x5x45 Deg. Wye - DWS070505 - \$40.80 ea.

Total with System Purchase - \$442.21



Deluxe Starter Duct Kit

With these basic parts you can connect 5 tools with countless configurations. You may need extra straight pipe but this is an easy way to start.

Included in Package

- (2) 7" Large Rad. 90 Deg. Adj. Elbow - DEA900700 - \$18.03 ea.
- (1) 7x5x5 45 Deg. Wye Joint - DWS070505 - \$40.80 ea.
- (4) 5x5x5 45 Deg. Wye Joint - DWS050505 - \$34.16 ea.
- (5) 5" Large Rad. 90 Deg. Adj. Elbow - DEA900500 - \$14.49 ea.
- (5) 5" Aluminum Blast Gate 5" Dia. - DGA050000 - \$22.94 ea.
- (25') 5" Dia. Flex Hose - DHF050000 - \$5.40 / Ft.*
- (10) 3 - 6" Dia. Band Clamp - ACB060000 - \$3.47 ea.
- (5) Blast Gate Adapter 5" Dia. - DAB050000 - \$8.61 ea.
- (5) Reducer 5" to 4" - DRL050400 - \$10.86 ea.
- (1) 7" Dia. x 24" Long 26 ga. Pipe - DPT260624 - \$7.85 ea.
- (5) 5" Dia. x 60" Long 26 ga. Pipe - DPT260560 - \$15.80 ea.
- (10) 5" Dia. x 24" Long 26 ga. Pipe - DPT260524 - \$5.77

Total - \$812.25

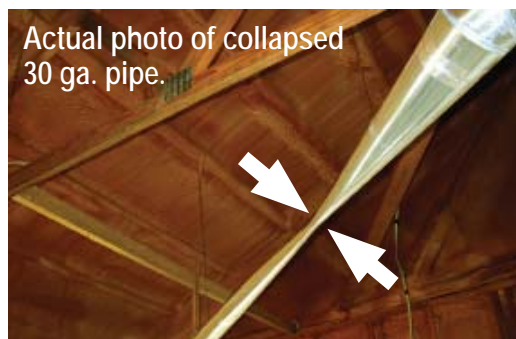
**Flexhose sold in 5' increments. Flexhose comes in one complete section and can be cut to different lengths.*

Notes:

Depending on the width of your shop and the plan you use, you may need extra pipe.

For the most efficient collection, keep woodworking tools within 30' of the dust collector.

Use 26 ga. straight pipe or heavier, 30 ga. can suck flat with our systems.



Add On Package for Miter Saw or RAS

- (1) 5" x 4" x 3" Wye - DWS050403 - \$34.16 ea.
- (1) 3" to 2" Reducer - DRL030200 - \$6.56 ea.
- (5') 2" Dia. Flex Hose - DHF020000 - \$3.75 / Ft.
- (2) Hose Clamps - ACB060000 - \$3.47 ea.
- (1) Hood - DOR050000 - \$24.66 ea.

Total - \$91.10

Let OAS help you design your dust collection system

FREE DIY Ductwork Design Guide available with purchase of 2hp Super Gorilla system.

Ductwork Design Service

For \$200.00, Engineers and qualified technicians will size and design a custom dust collection system complete with ductwork layout for your shop, including the proper pipe dimensions to run each piece of equipment.

Trained sales technicians are available to answer questions: **1.800.732.4065**

Ductwork Estimate:

Snaplock pipe & Components (24 - 26 gauge) is available with this system and costs approximately \$200 - \$225.00 per woodworking tool port. Average cost estimate for ductwork:

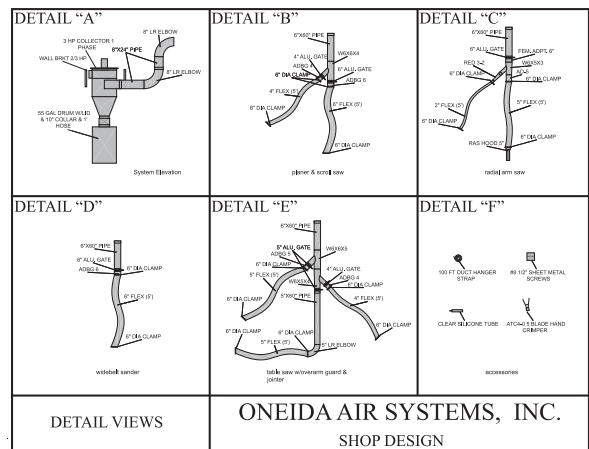
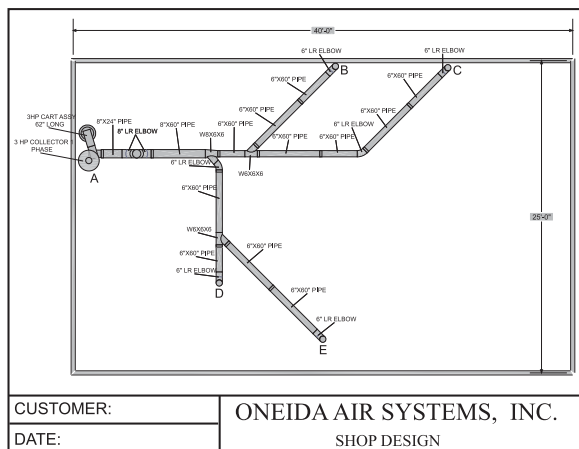
$$(\text{\# of Machines}) \times \$200 - \$225.00 = \text{Ductwork Estimate 24 - 26 Ga. ductwork}$$

Spiral pipe (24 Ga.) and heavy elbows are available with this system and costs approximately \$300 - \$325.00 per woodworking tool port. Average cost estimate for ductwork:

$$(\text{\# of Machines}) \times \$300 - \$325.00 = \text{Ductwork Estimate 24 Ga. spiral pipe \& heavy gauge elbows}$$

Shipping:

Snaplock shipping is free on \$100+ ductwork order / 48 states / Some restrictions apply.



**Ready-to-Ship
Ductwork**



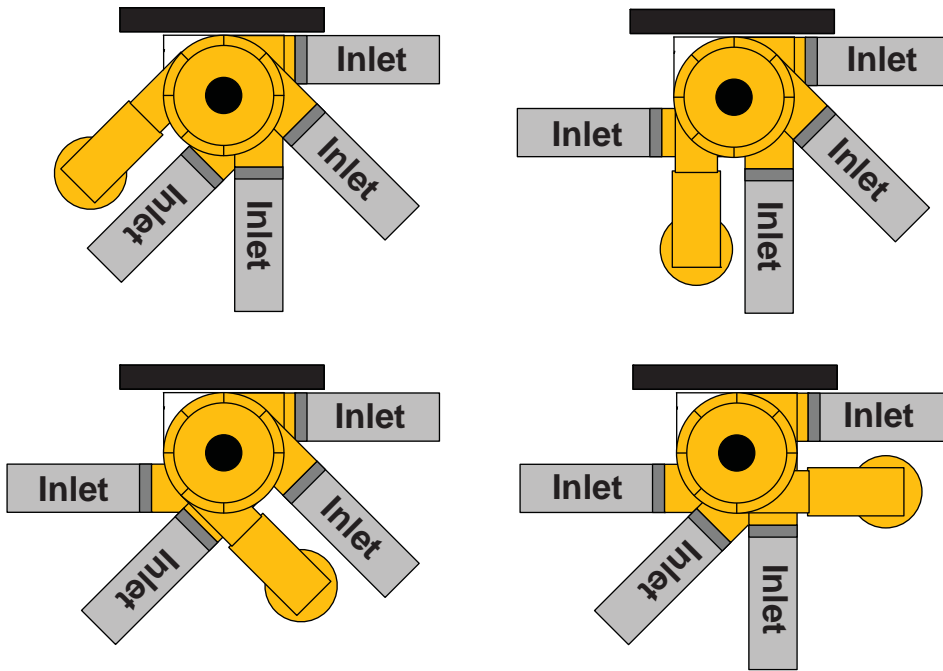
"Service was always great. One of the main reasons I chose Oneida was for the design service and it was all that I hoped for. I felt that the system recommended to me was exactly what my shop needed."

- R.W.

Filter and Inlet Positions

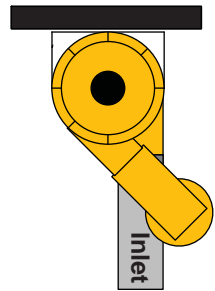
Possible Filter Positions -

Fan housing and cyclone bolt holes are drilled at 45 degree increments. Some orientations are not possible. Please check your design.

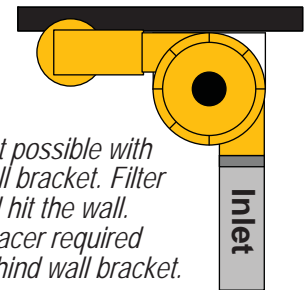


Not Possible Filter Positions -

Filter hits inlet pipe.



Not possible with wall bracket. Filter will hit the wall. Spacer required behind wall bracket.



Statement:

Shop plan ductwork and system drawings are drawn to appropriate dimensions and in no way should be considered exact measured drawings. Oneida Air assumes no responsibility for system dimension or configuration limitations at the time of installation. Oneida Air is not responsible for shop down time as a result of installing Oneida dust collection systems and ductwork.

General Guidelines for an Efficient Duct System

Metal Duct Gauge

Caution: Sheet metal fittings can have sharp edges.

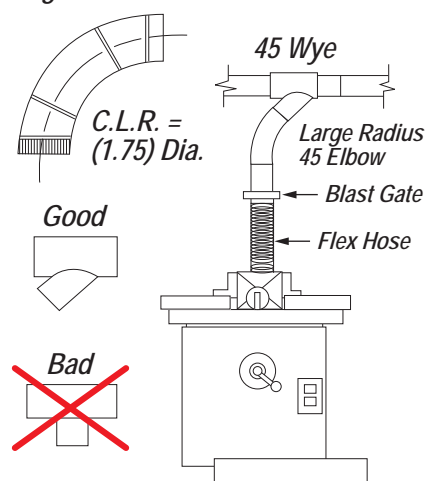
Small custom shops do well with 22 - 26 gauge pipe fittings. Thinner gauges (such as HVAC pipe) can collapse under fan pressure or dent too easily. Shorter and more direct pipe runs are best and will deliver more air volume to the woodworking machine. Elbows and turns should be kept to a minimum. Use large radius elbows, with a center line radius at least 1.5 times the diameter.

Flex hose connections to machines can be the simplest and easiest way to connect your machines to the metal duct. Flex hose creates more air resistance than metal pipe. Use short lengths of flex hose for connecting to machines. Use wire wrapped helix flex hose for static grounding, bare the ends so they contact the metal pipe. Blast gates can be used at every machine to control air flow.

Use 45 degree wye branches, not 90 degree tee branches. A wye branch has 4x the efficiency of a tee. A 45 degree wye with a 90 degree elbow adjusted to 45 degrees will create a gentle sweep that can be used as a vertical drop or as a right or left turn off of the main duct line. Seal all ducting. Silicone makes a good sealant. Even small cracks can create significant air loss.



Large Radius Elbow



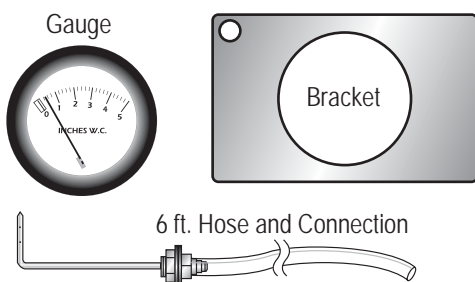
Accessories



Fiber and Steel Drums

Part #	Description	Price
SDK350901	35 Gal. Fiber Drum Kit 9"	\$61.68
SDK550901	55 Gal. Fiber Drum Kit 9"	\$79.73
SEK550901	55 Gal. Steel Drum Kit 9"	\$127.93

Kit includes Flex Hose & Hose Clamps



Filter Efficiency Gauge

Part #	Description	Price
FXK000000	Filter Efficiency Gauge Kit	\$113.85

This easy to read gauge takes the guesswork out of knowing when your filters need to be cleaned and tells you how much pressure is backed up behind your filters. It reads pressure from plenum to gauge up to 8' away and allows you to keep your dust collection system running efficiently.



No line of sight required.
Radio frequency.

Remote Control Switch

Part #	Description	Price
AXR220000	Remote Control Switch	\$77.28



Heavy-Duty freestanding stand..

Angle Iron Stands

Part #	Description	Price
STG000035	35 Gal. Stand	\$217.28
STG000055	55 Gal. Stand	Upgrade from Bracket

55 Gal. drum will not fit with 35 gal. stand.



Enables you to line your dust drum with a plastic bag for easy, safe dust disposal.

The Bag Gripper

Part #	Description	Price
ABX000000	Bag Gripper Assembly	\$116.58 Purchased with Gorilla

\$166.58 if purchased separately

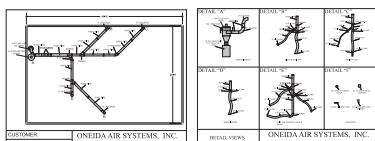


Filters are easily cleaned by blowing from the outside with compressed air.

Spun-Bond filters 99.9% of test material from 0.2 - 2 microns.
HEPA filters 99.97% of test material from 0.3 microns. For applications other than wood dust or when the best filtration is required.

Replacement Filters

Part #	Description	Price
FCS133995	13" x 39" Spun-Bond Filter	\$175.45
FCS133995H	13" x 39" HEPA Media Filter	\$379.00



Ductwork Design Service

Part #	Description	Price
MES000000	Ductwork Design Service	\$200.00

Caution:

If exhaust air is vented outside you must provide make up / return air.

Flue gases (carbon monoxide) can be drawn into the shop from furnaces, water heaters or other appliances.

**Note: Motors should be protected from extreme weather to prolong motor life. Single phase motors should only be started and stopped up to 4 - 10 times per hour. Starting single phase motors more frequently can cause heat build up and can cause the motor overload to trip or cause motor damage. In general, motors should be started and stopped as little as possible for maximum lifespan and best economy (electrical use).*

Items Not Covered By Quotation

1. Control System: Panels, wiring, system control, breaker or starters unless noted in this quotation.
2. Freight cost, custom fees, duty or loading of freight unless noted in this quotation.
3. Federal, state, municipal or other government excise, sales, use, occupational or other like taxes now in force or to be enacted unless noted in this quotation.
4. All labor required for installing the equipment.
5. Anything not specifically mentioned in this quotation.
6. Oneida Air Systems, Inc. reserves the right to void this quote in the event of a typing error or gross oversight.

Fire Hazards and Codes

The buyer is cautioned to install and operate Dust Collectors in accordance with prescribed federal, state, OSHA, NFPA, local codes and regulations. In most cases dust collectors should be located outside of buildings. If the collector is to be located inside or if filtered air is routed back into the facility, the buyer is responsible to do so in accordance with codes and regulations.

The customer assumes the responsibility for contacting their insurance underwriter with regard to specific application requirements of explosion venting or if additional fire protection and safety equipment may be required.

Returned Goods Policy

Buyer must inform O.A.S. of any shortage or damage, by so noting in writing, on the freight delivery bill prior to signing to indicate receipt of shipment. All claims, including claims covered under the limited warranty, are subject to inspection and investigation by O.A.S. O.A.S. reserves the right to inspect, investigate all returned products before Buyer's claim is settled. All products returned for a cash refund must be unused, resaleable and purchased within 30 days. There are no refunds on flex hose, custom made components or partial kit items. Kits must be returned in full (all components) for credit. ***There will be a 25% restocking fee applied to any returned items. Buyer must call and get an RMA (Return Authorization Number). Merchandise must be shipped to us prepaid.***

Limited Warranty

Oneida Air Systems warrants products it manufactures for a period of 2 years to the original purchaser from the date of purchase. Items not manufactured by O.A.S. are limited to their own manufacturer's warranties. All electrical items such as magnetic starters, remotes, sensors, pumps and accessories are limited to 90 days. This warranty does not apply to defects directly or indirectly to misuse, negligence, accidents, abuse, repairs, or alterations or lack of maintenance. This is Oneida Air Systems sole written warranty and any warranties that may be implied by law, including any merchantability or fitness, for any particular purpose, are hereby limited to the duration of this written warranty. O.A.S. does not warrant or represent that the merchandise complies with the provisions of any law or acts unless the manufacturer so warrants. In no event shall O.A.S.'s liability under this warranty exceed the purchase price paid for the product and any legal actions brought against Oneida Air Systems shall be tried in the State of New York, County of Onondaga.

Oneida Air Systems shall in no event be liable for death, injuries to persons or property or for incidental, contingent, special, or consequential damages arising from the use of our product.

Oneida Air Systems does not warrant or authorize use of wood dust collectors for other purposes. This includes wood products that are treated, coated, or otherwise altered from their natural state.