

Terms & Conditions

Oneida Air Systems makes every effort to accurately represent our products and prices, however OAS reserves the right to make changes to products and prices at any time. As a manufacturer, OAS reserves the right to change product specifications at any time in an effort to achieve better quality products.

Fire Hazards and Codes

Warning! Explosion and fire hazard! Never vacuum flammable fluids or gas, oil, alcohol, solvents, etc. Do not operate near flammable fluids or gas. Never vacuum warm fluids or materials at more than 140 deg. F (60 deg. C), such as burning cigarettes, ashes, glowing coals, etc.
Warning! Do not vacuum hazardous / carcinogenic dust unless a HEPA filter is installed.
Always keep filter cartridge clean so the vacuum operates properly.
Empty Dust Deputy waste can frequently. Never leave flammable material in your Dust Deputy or shop vacuum.

Returned Goods Policy

Buyer must inform O.A.S. of any shortage or damage, by so noting in writing, on the freight delivery bill prior to signing to indicate receipt of shipment. All claims, including claims covered under the limited warranty, are subject to inspection and investigation by O.A.S. O.A.S. reserves the right to inspect, investigate all returned products before Buyer's claim is settled. All products returned for a cash refund must be unused, resaleable and purchased within 30 days. There are no refunds on flex hose, custom made components or partial kit items. Kits must be returned in full (all components) for credit. **There will be a 25% restocking fee applied to any returned items. Buyer must call and get an RMA (Return Authorization Number). Merchandise must be shipped to us prepaid.**

Limited Warranty

Oneida Air Systems™ warrants the products manufactured by Oneida Air Systems, for a period of 90 days or more depending on the product, to the original purchaser from the date of purchase unless otherwise specified. Purchaser is responsible for returning warranty items to OAS at their expense. All parts must be returned with an OAS provided Returned Material Authorization Number (RMA#). Any shipment without an RMA will be refused. Items not manufactured by Oneida Air Systems are limited to their own manufacturer's warranties. All electrical items such as magnetic starters, remotes, sensors, pumps and accessories are limited to 90 days. Oneida Air Systems warrants that the product will be free from defects in materials and workmanship. This warranty does not apply to defects due directly or indirectly to misuse, negligence, accidents, abuse, repairs, alterations, improper wiring or lack of maintenance. This is Oneida Air Systems sole written warranty and any and all warranties that may be implied by law, including any merchantability or fitness, for any particular purpose, are hereby limited to the duration of this written warranty. Oneida Air Systems does not warrant or represent that the merchandise complies with the provisions of any law or acts unless the manufacturer so warrants. In no event shall Oneida Air Systems' liability under this warranty exceed the purchase price paid for the product and any legal actions brought against Oneida Air Systems shall be tried in the State of New York, County of Onondaga.

ONEIDA AIR SYSTEMS SHALL IN NO EVENT BE LIABLE FOR DEATH, INJURIES TO PERSONS OR PROPERTY OR FOR INCIDENTAL, AND CONTINGENT, SPECIAL, OR CONSEQUENTIAL DAMAGES ARISING FROM THE USE OF OUR PRODUCT.

Before Purchasing or Installing a dust collection system the buyer is cautioned to do so in accordance with prescribed Federal, State, Local, OSHA, NFPA, and any other applicable codes or regulations relating to the type of dust(s) you are collecting.

SOME TYPES OF DUST UNDER CERTAIN CONDITIONS HAVE THE POTENTIAL TO BE EXPLOSIVE.

Oneida Air Systems is not responsible for how the dust collector is used or installed. Dusts with deflagration or explosion risks, such as wood dust, may require additional safety equipment including but not limited to; venting, spark detection, suppression systems, back draft dampers or may require installation in an outside location or in a protected area away from personnel. The customer assumes the responsibility for contacting their insurance underwriter with regard to specific engineering controls or application requirements. (We suggest you reference NFPA 664, 654 and 68 codes for more information) Oneida Air Dust Collection Systems may not be suitable for some applications and are not designed to be used in explosive atmospheres. **Oneida Air Systems equipment should only be installed and wired by a licensed electrician following all applicable local and national electrical codes.**



ZBM000036DEL10 / 1-2014



The Original
Dust Deputy®



AXD000010

U.S. Patent #7,282,074 C1

**Deluxe Dust Deputy® Owner's Manual
with 10 Gal. Steel Drum**

1.800.732.4065 www.oneida-air.com

System Start-Up Information

Safety Instructions to be Strictly Followed.

Read the installation and maintenance instructions as well as the recommended safety practices in this manual and your shop vacuum's owner's manual before assembling and using the Dust Deputy®.

- ▶ Do not vacuum anything that is burning or smoking, such as cigarettes, matches, or hot ashes.
- ▶ Do not vacuum, or use this Dust Deputy® near flammable or combustible liquids, gases, or explosive dusts, such as gasoline or other fuels, lighter fluid, cleaners, oil-based paints, natural gas, hydrogen, coal dust, magnesium dust, grain dust, aluminum dust, sugar dust, flour dust or gun powder.
- ▶ To reduce the risk of health hazards from vapors or dusts, do not vacuum toxic materials unless a HEPA filter is used. Do not use or store near hazardous materials.
- ▶ The Dust Deputy® is made from static dissipating plastic. Additional grounding is recommended for increased safety. See grounding instructions.
- ▶ Wood dust mixtures are highly flammable and can be explosive. **NEVER** introduce sparks or sources of ignition into collector.
 - 1.) Dump drum after each use.
 - 2.) Ground system. (See pg. 9) For added safety.
- ▶ **NEVER leave wood dust in a building or vehicle.**
- ▶ Keep fire extinguishers handy at all times.
- ▶ Can be used for collecting non-flammable liquids.
- ▶ **Always read your shop vacuum owner's manual for safety procedures regarding the operation of your shop vacuum.**
- ▶ Dispose of waste in a **FIRE SAFE AREA.**

WARNING / SAFETY

Some dusts are highly flammable or explosive. Learn / know what you are dealing with. Follow all local, state, federal & NFPA codes and guide lines.

Troubleshooting

- ▶ Dust Deputy® not separating well. (Only a tiny amount of dust should reach the vacuum.)
Air leak. Check cyclone flange / drum lid / barrel. Even small leaks will affect performance.
- ▶ Low air volume.
Vacuum filter clogged. Blockage in hose.
- ▶ Material swirls in cyclone and won't drop down into drum.
Air leak in bottom of cyclone / drum lid or dust drum.
Large, bulkier material might swirl. Restart or temporarily cut off air flow to drop material down.
- ▶ Hose connections not tight.
Due to the varied hose diameters, flexible couplers can be used. They are available at local hardware stores in the plumbing section.



To Prevent Hose Pull Off

- The inlet and outlet of the Dust Deputy® are shouldered and tapered to adapt to a range of vac hose sizes. If on your model the friction fit isn't as tight as needed you can do the following:**
- ▶ Use a hose clamp.
 - ▶ Wrap the inlet and outlet of the Dust Deputy with a layer of electrical tape to increase the friction fit.
 - ▶ Secure with a sheet metal screw.

Accessories



Hollow handle scraper attaches by hose to vacuum source and sucks debris through handle to container. Eliminates mess from scraping that usually falls to floor.

UltraClean Scraper™

Part #	Description
AXS000000	UltraClean Scraper™
AXS000001	Extra Tungston Carbide Blade Set

Adding Cyclones to Improve Performance

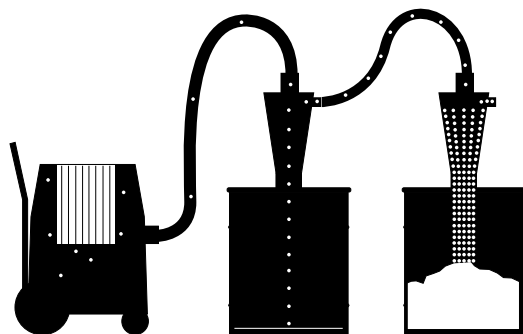
Top View



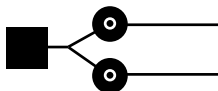
This arrangement may be useful for very fine dust situations.

Attach in Series

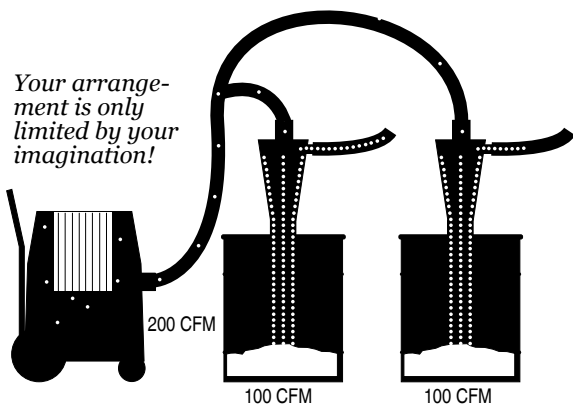
Increases particle efficiency.



Top View



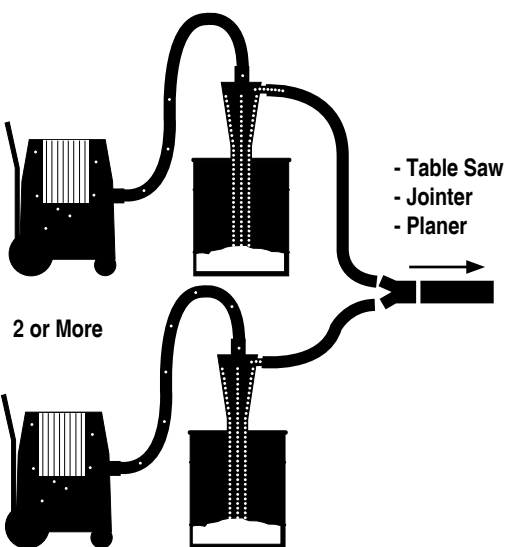
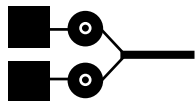
Your arrangement is only limited by your imagination!



Attach in Parallel

Same particle efficiency but increases CFM.

Top View



Multiple Vacuums

More Airflow to Big Tools.
More CFM.

Kit Contents

Plastic Deluxe Dust Deputy® w/ 10 Gal. Steel Drum - AXD000010

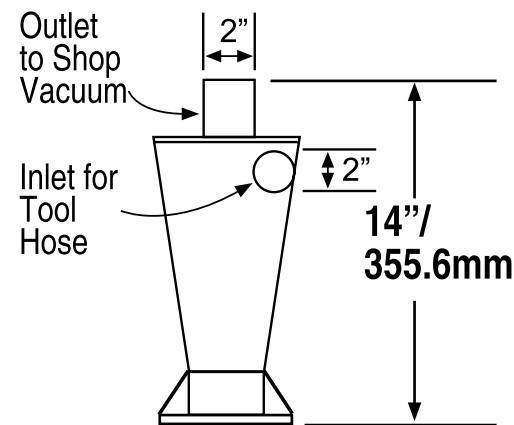
U.S. Patent #7,282,074 C1



SDD000002 - Drum Dolly Frame - 10 gal. (1)
SEX100000 - Drum Lid (1)
RHC000006 - Caster (4)
VXC110002 - Plastic Cyclone (1)
SES100000 - 10 gal. Steel Drum w/ Clamp (1)
AXD250066 - Hose 2.5"x 5.5' (1)
VFA050015 - Grounding Tape (1)
BBS001205 - Plastic Spacer (1)

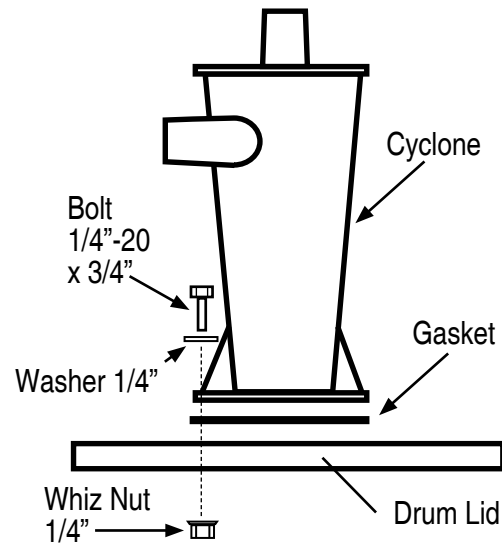
AXG000004 - Gasket (1)
AFW380125 - Felt Washer (1)
AFW180000 - Washer Flat 5/16" (1)
AFW025000 - Washer Flat 1/4" (6)
AFT155175 - Whiz Nut 5/16" (4)
AFT000005 - Whiz Nut 1/4" (7)
AFS015920 - Hex Bolt 1/4-20 x 3/4" (6)
AFB025175 - Carriage Bolt 1/4-20 x 1 3/4" (1)

Dimensions



Cyclone

Assembly Instructions for Dust Deputy®



Place supplied gasket on drum top, lining up holes in gasket with holes in lid. Put metal tape on cyclone as shown then place bolt through washer then put bolt through hole in base of cyclone. Secure with nut underneath.

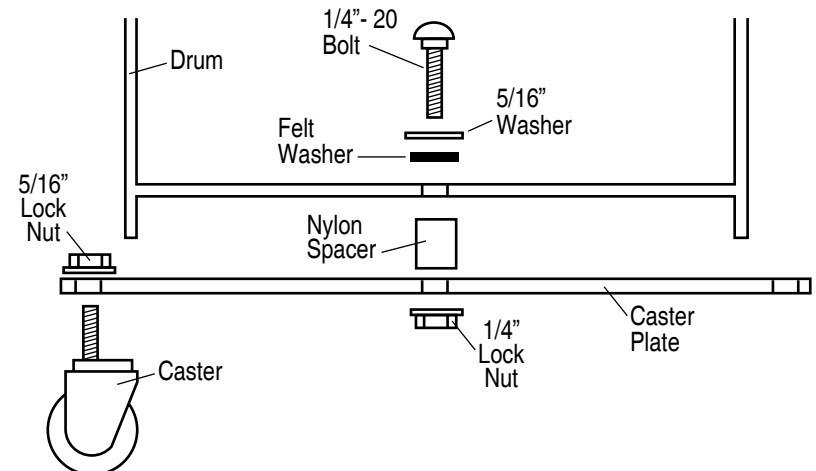


For additional static reduction, install metal grounding tape as shown.

3.

10 Gallon Drum Dolly Assembly - SDD000002

1. Install the (4) casters by inserting stems through the four perimeter holes in dolly legs. Put on a 5/16" lock nut on each caster stem and tighten with a wrench.
2. Measure, center punch and drill a 1/4" hole in the center of drum bottom.
3. First put metal washer, then felt washer on the 1/4"-20 carriage bolt. Insert bolt into the drilled hole from **INSIDE** the drum. Slip nylon spacer over bolt so that it is on the outside of drum against the bottom. Put caster plate over the bolt and tighten with 1/4"-20 lock nut as shown in photo. This allows the felt washer to seal the hole in the drum. It is very important for your unit's performance that there are no air leaks.



4.